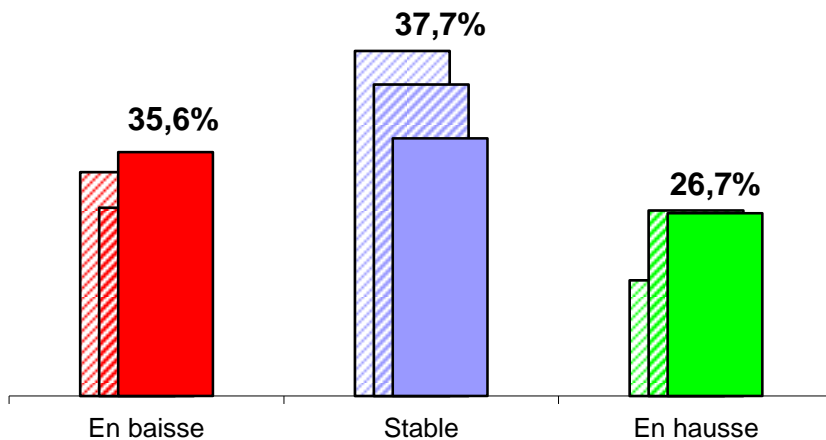
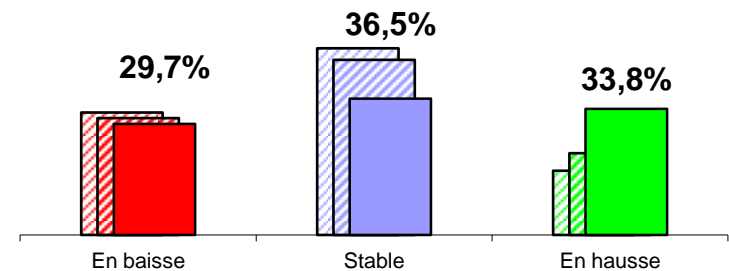


Enquête conjoncture décembre 2011

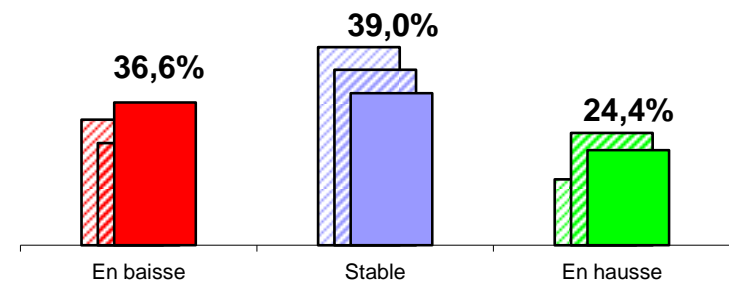
252 réponses

Volume d'activité
sur les 12 derniers mois : -1,1 %

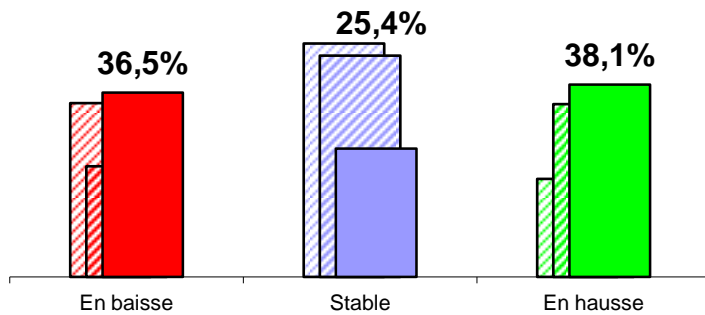
Gros-Œuvre : +3,7%



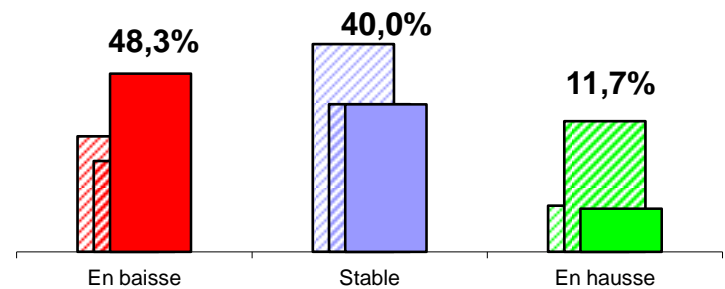
Second Œuvre : -2,6%



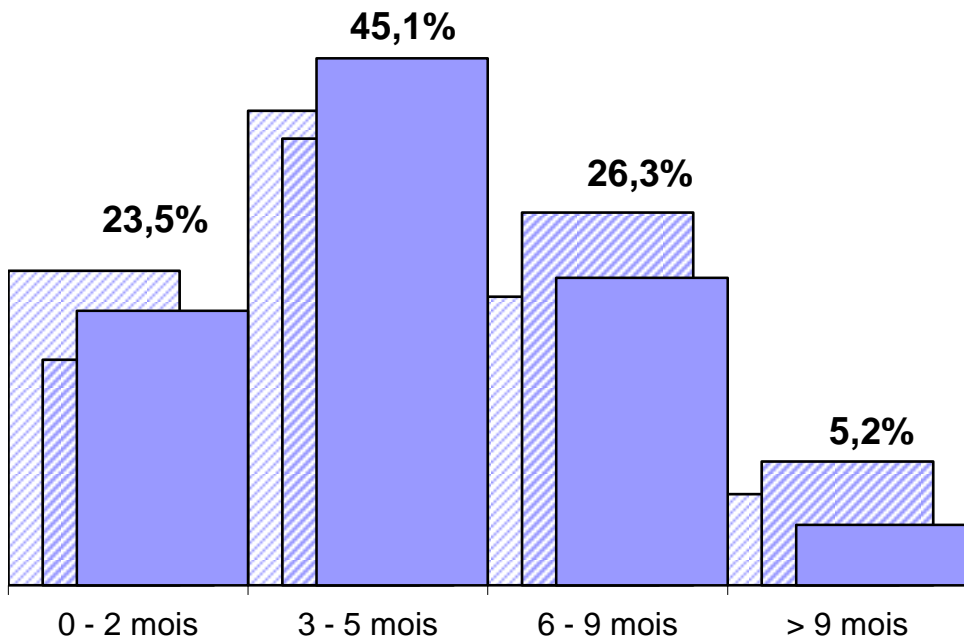
Gironde : +3,6%



Pyrénées-Atl. : -6,3%



Carnet de commande moyen : **4,4 mois**



Gros-Oeuvre: **4,9 mois**

Second-Cœuvre : **4,2 mois**

« + 10 salariés » : **5,0 mois**

« - 10 salariés » : **3,8 mois**

Gironde : **4,9 mois**

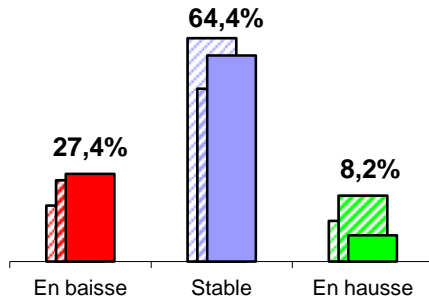
Dordogne: **4,9 mois**

Lot-&-Gar. : **4,7 mois**

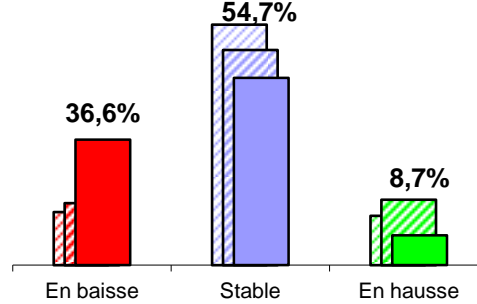
Pyrénées Atl. : **4,2 mois**

Landes: **3,8 mois**

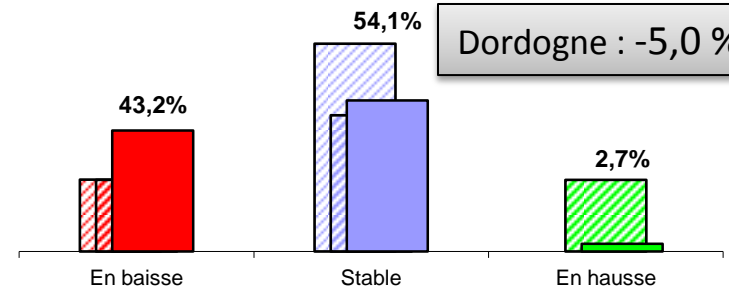
Gros-Œuvre : -1,2 %



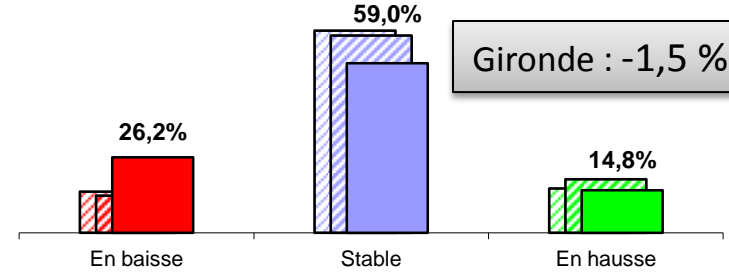
Second-Œuvre : -4,3 %



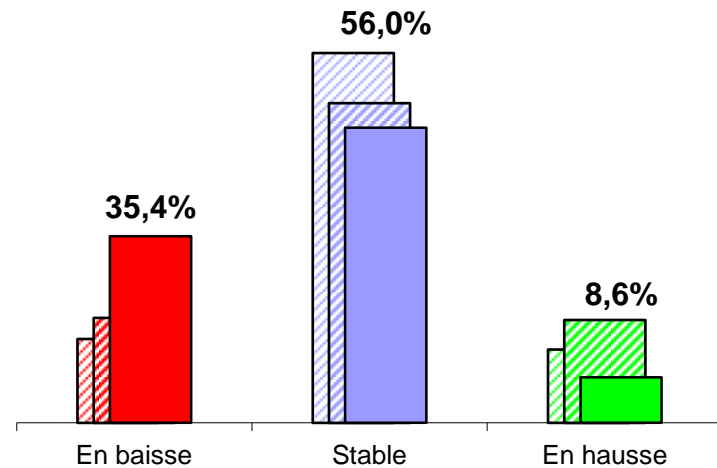
Dordogne : -5,0 %



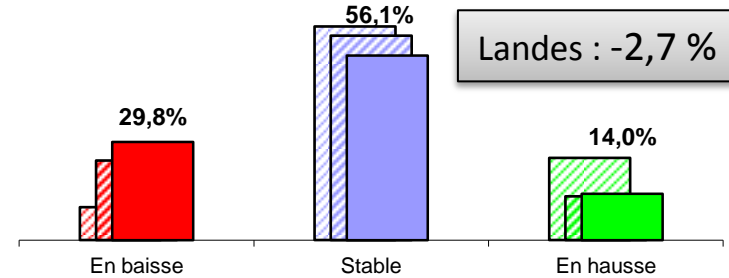
Gironde : -1,5 %



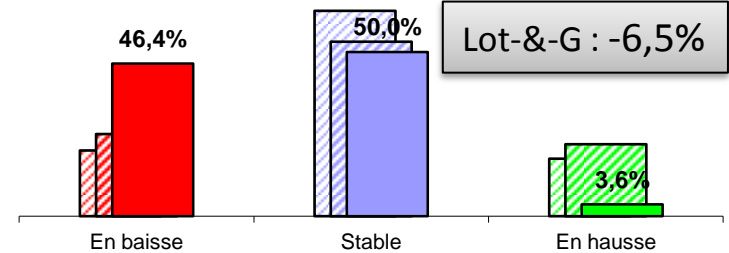
Volume d'activité
sur les 12 prochains mois : - 3,6 %



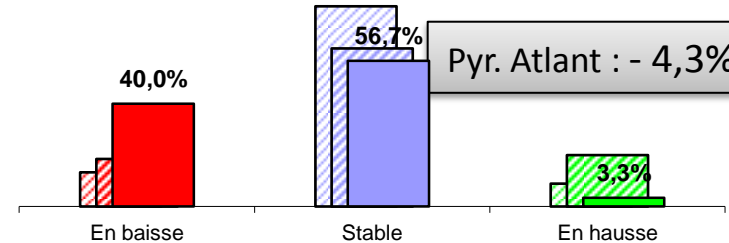
Landes : -2,7 %



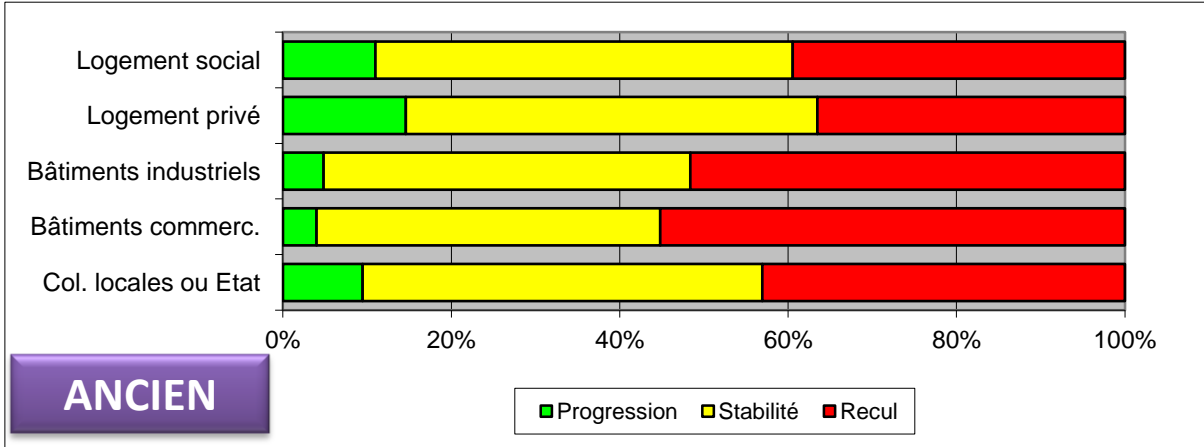
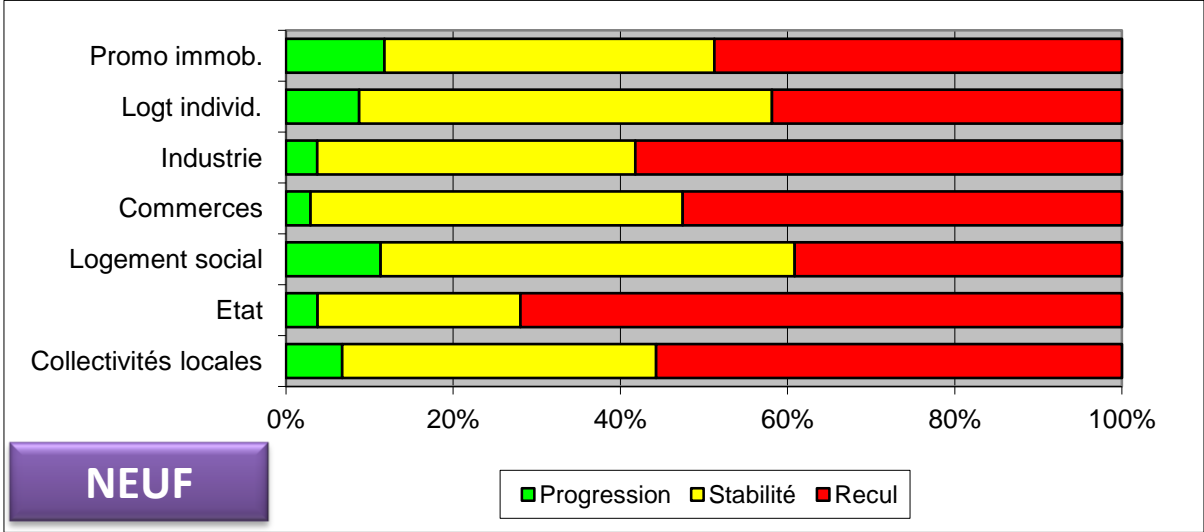
Lot-&-G : -6,5 %



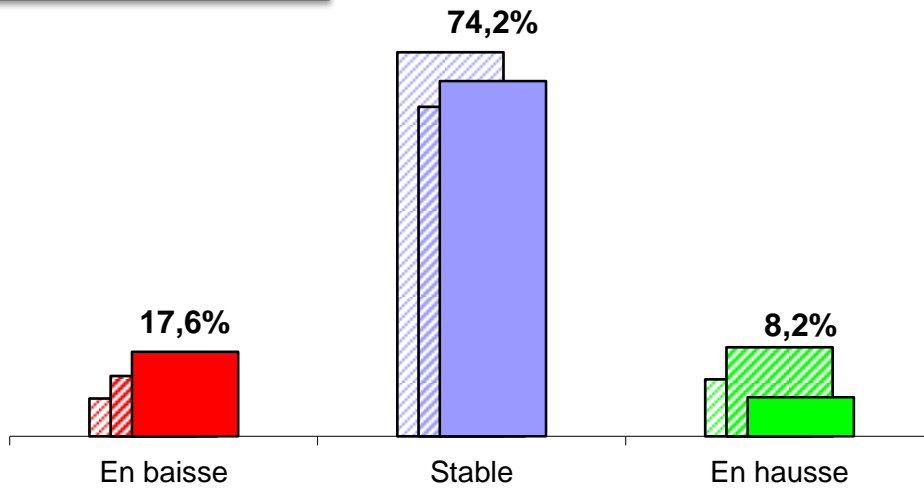
Pyr. Atlant : - 4,3 %



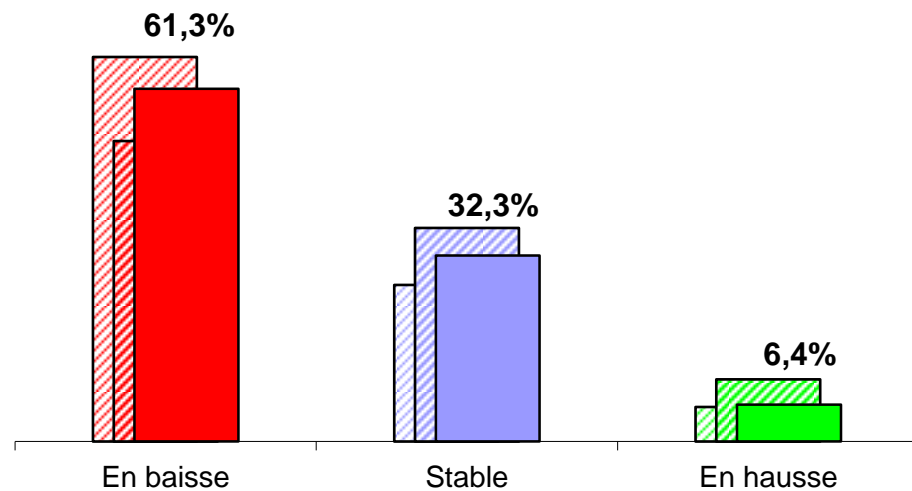
Perception de l'évolution actuelle des marchés



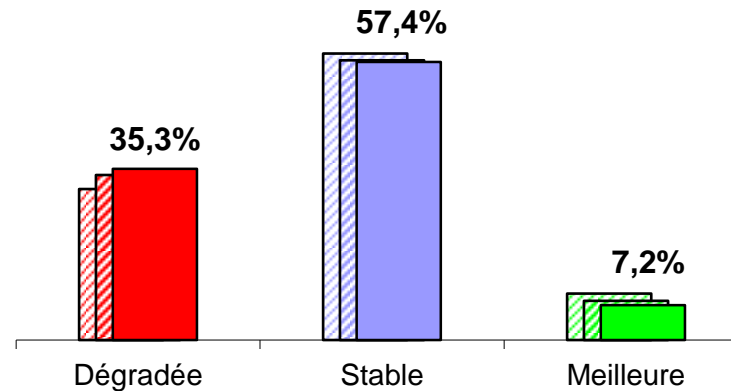
Prévisions d'emploi



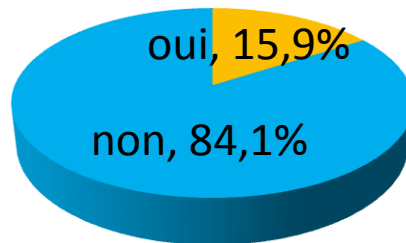
Perception de l'évolution des prix



Situation de la trésorerie



Durcissement des relations avec les banquiers ?



Durcissement des relations avec les fournisseurs?

