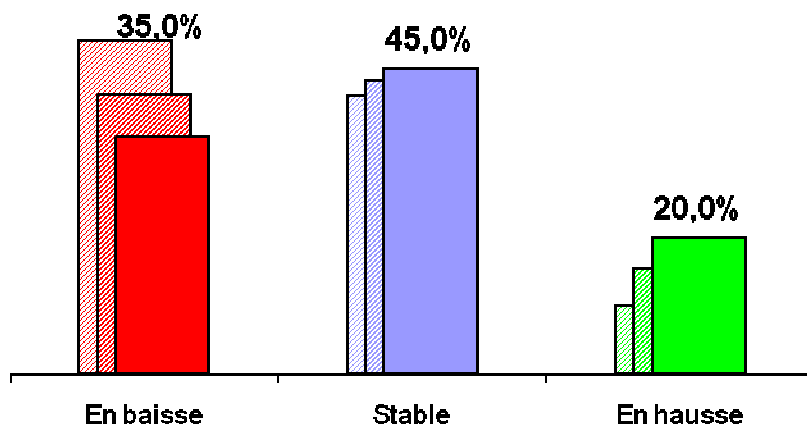


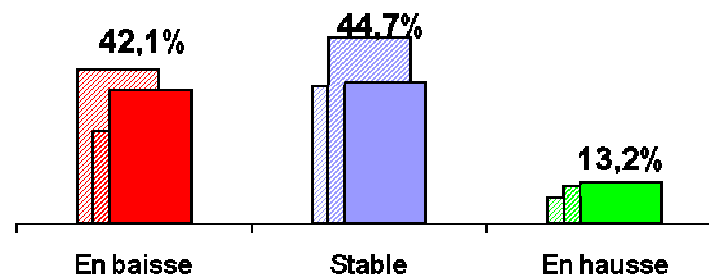
Conjoncture économique : enquête septembre 2010

263 réponses

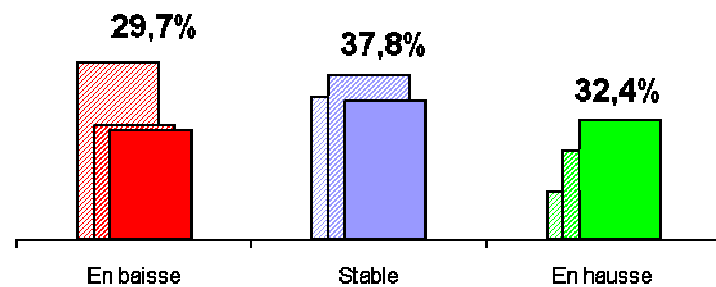
Volume d'activité
sur les 12 derniers mois : -2,2 %



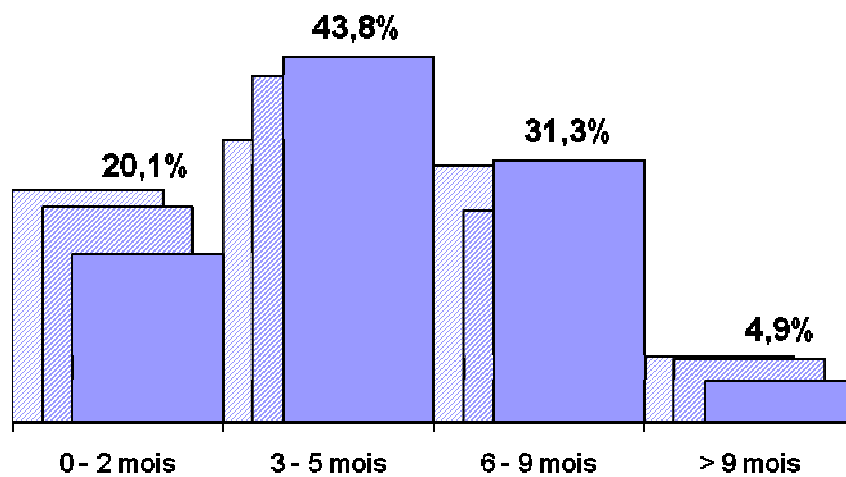
Dordogne : -5,9 %



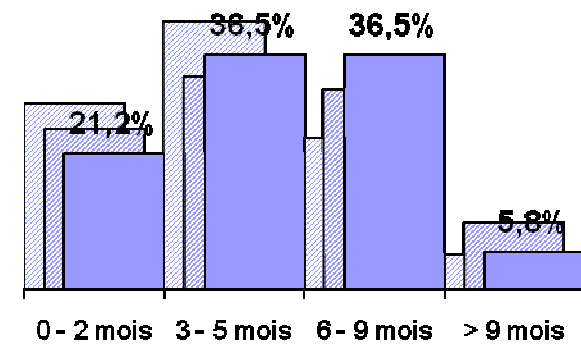
Lot-&-Garonne : +1,6 %



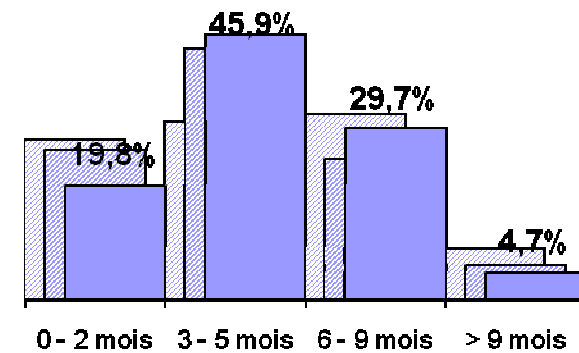
Carnet de commande moyen : 4,6 mois



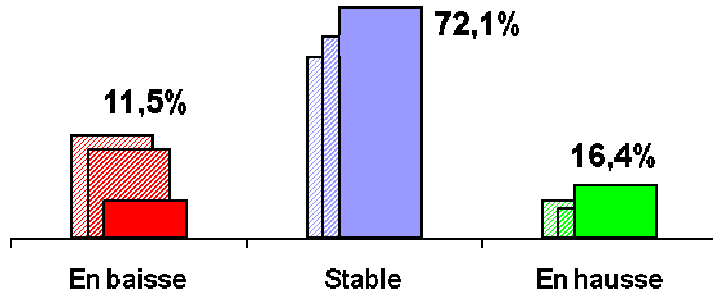
Gros-Œuvre : 4,8 mois



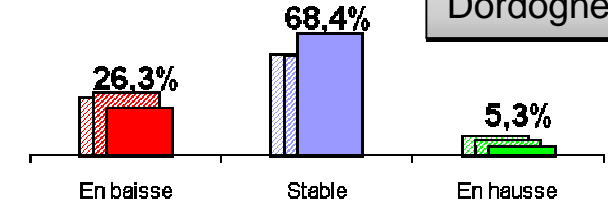
Second-Œuvre : 4,6 mois



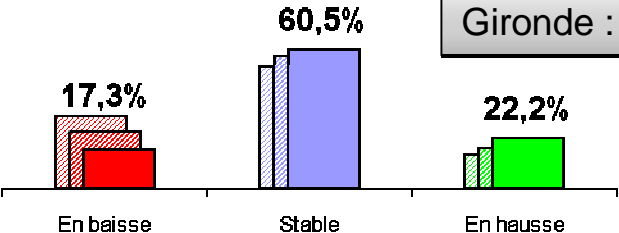
Gros-Œuvre : +1,4 %



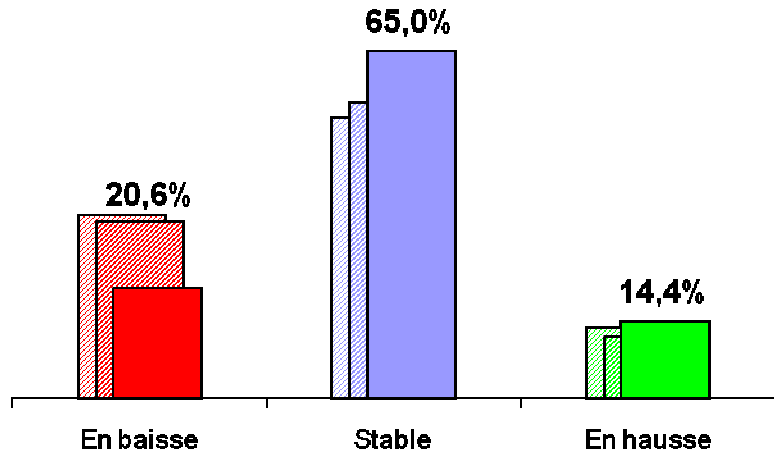
Dordogne : -4,5 %



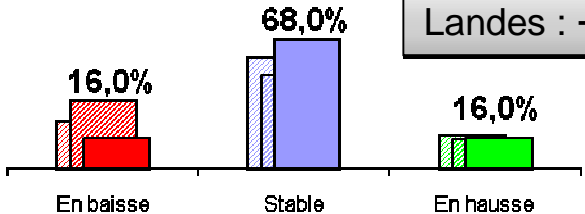
Gironde : +1,5 %



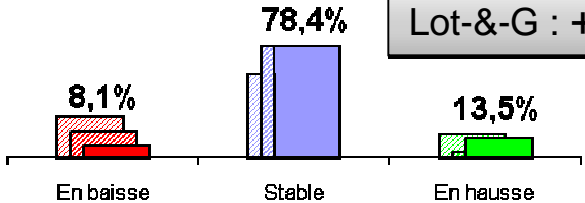
Volume d'activité sur les
12 prochains mois : -0,9 %



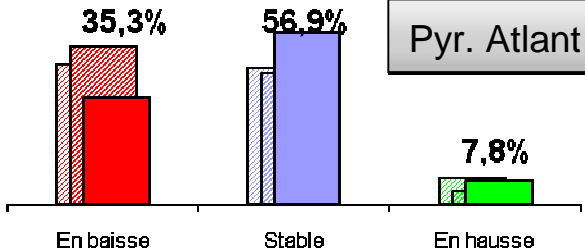
Landes : +0,6 %



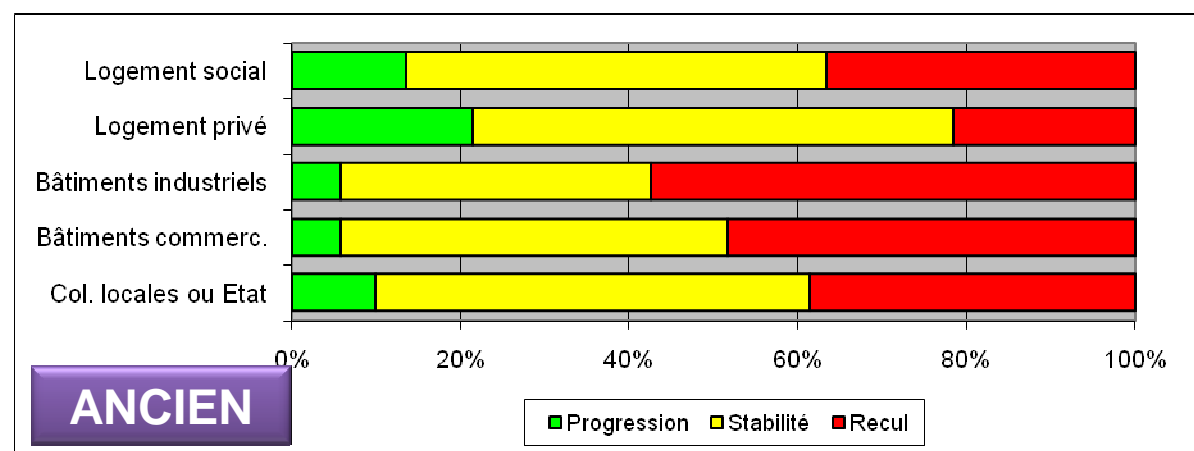
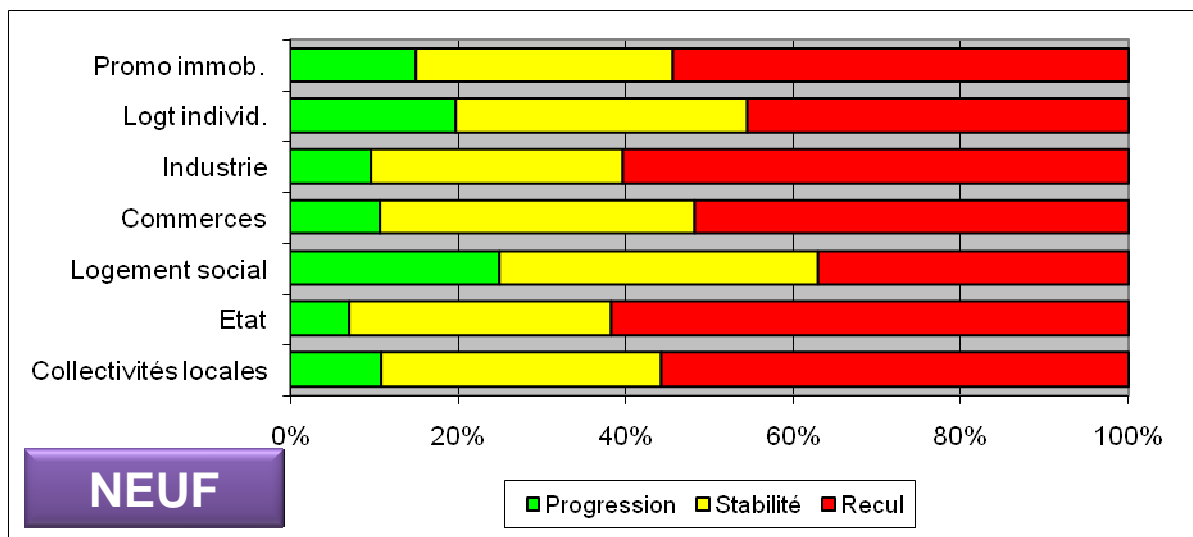
Lot-&-G : +0,9 %



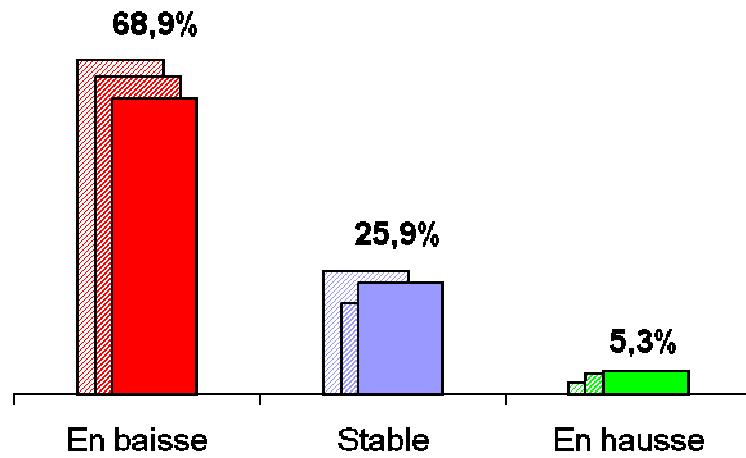
Pyr. Atlant : -4,7 %



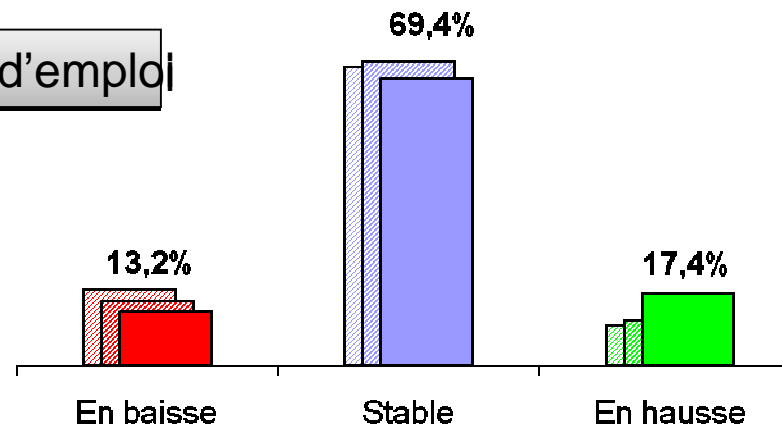
Perception de l'évolution actuelle des marchés



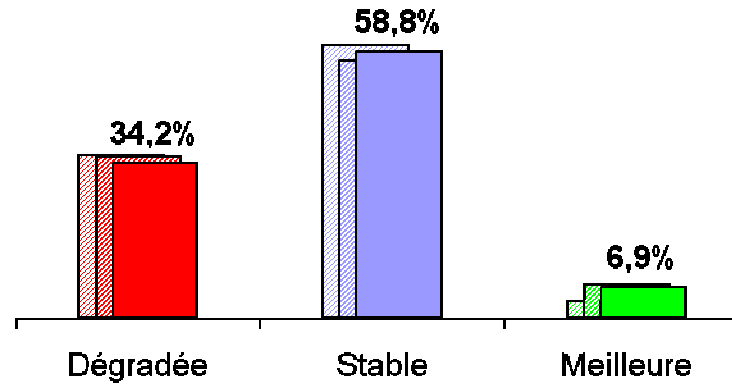
Perception de l'évolution des prix



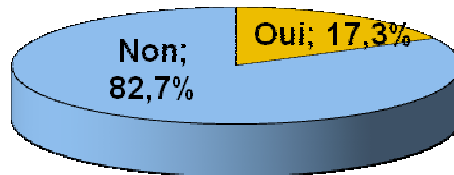
Prévisions d'emploi



Situation de la trésorerie



Durcissement des relations avec les banquiers ?



Durcissement des relations avec les fournisseurs?

