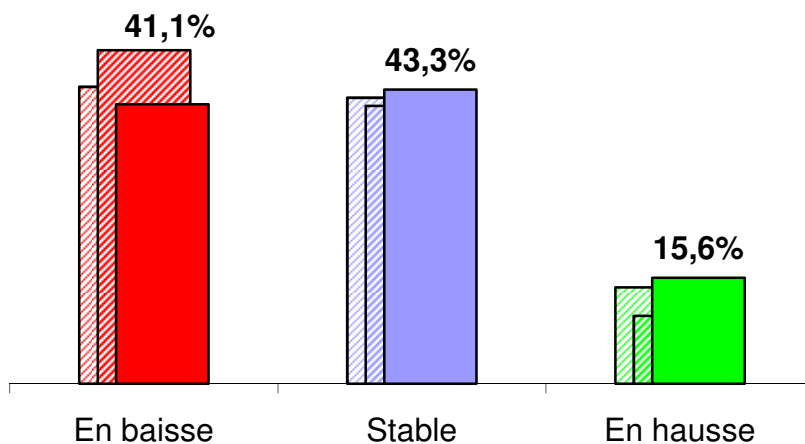


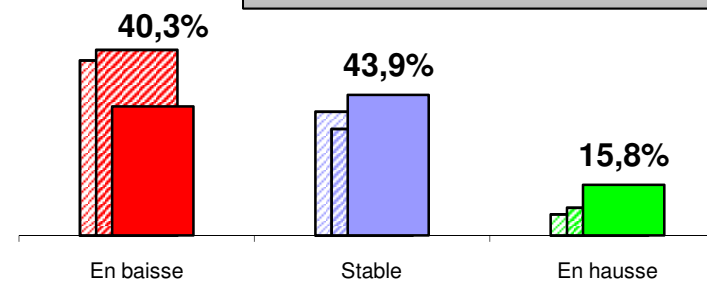
Conjoncture économique : enquête juin 2010

220 réponses

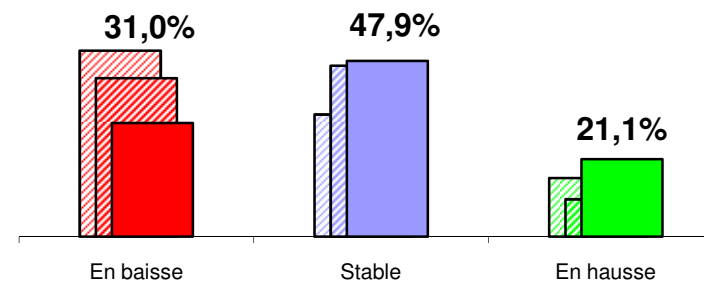
Volume d'activité
sur les 12 derniers mois : **-2,7 %**



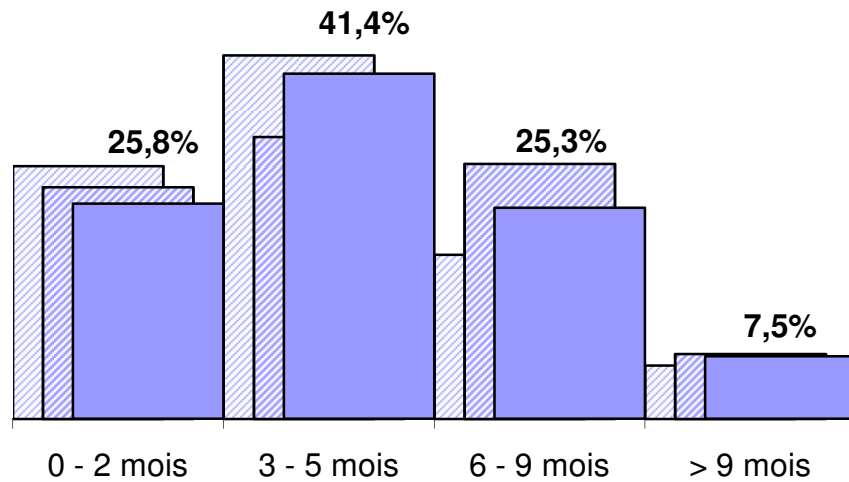
Gros-Œuvre : **-0,5 %**



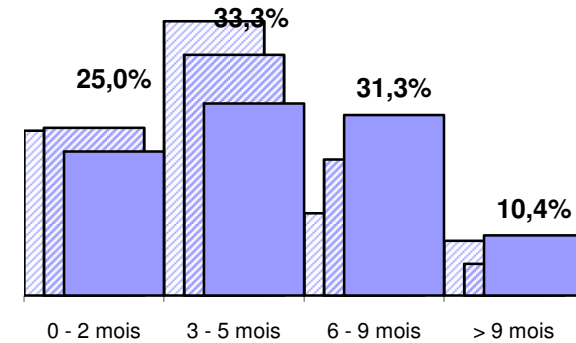
Gironde : **+3,6 %**



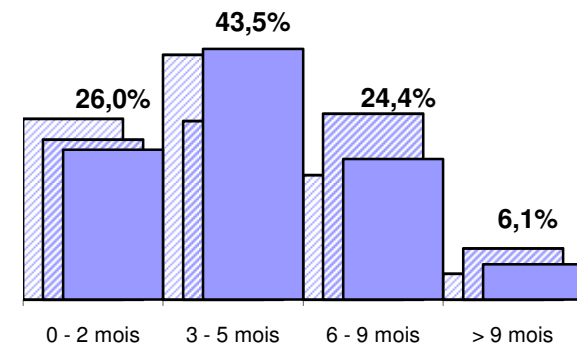
Carnet de commande moyen : **4,4 mois**



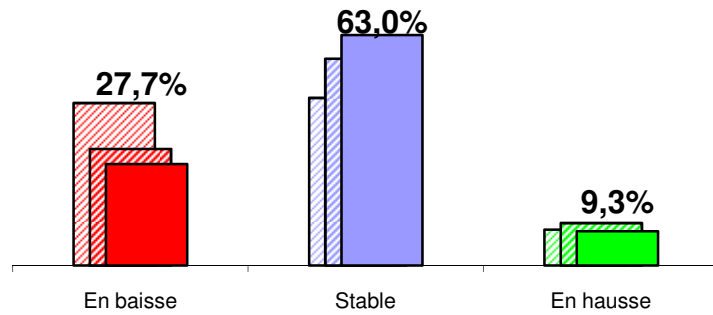
Gros-Œuvre : **4,9 mois**



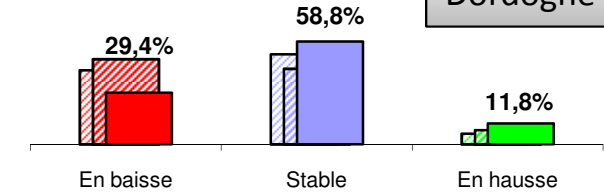
Second-Œuvre : **4,2 mois**



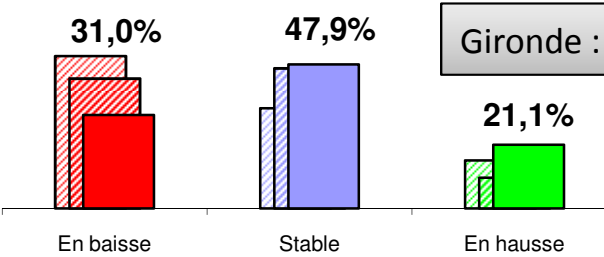
Gros-Œuvre : -1,0 %



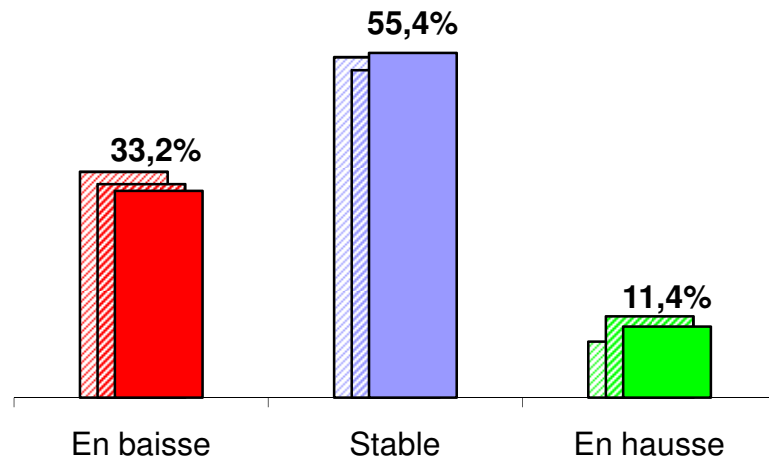
Dordogne : -4,1 %



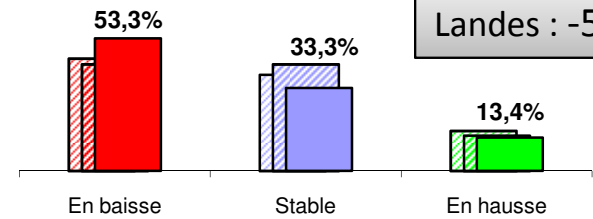
Gironde : +0,2 %



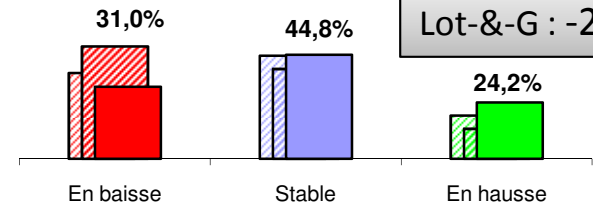
Volume d'activité
sur les 12 prochains mois : -2,3 %



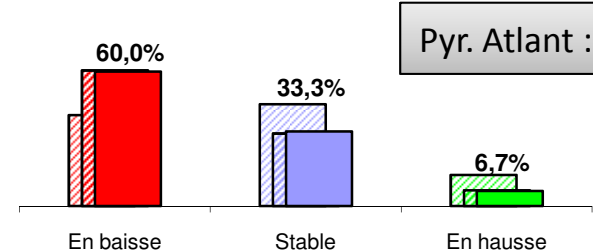
Landes : -5,8 %



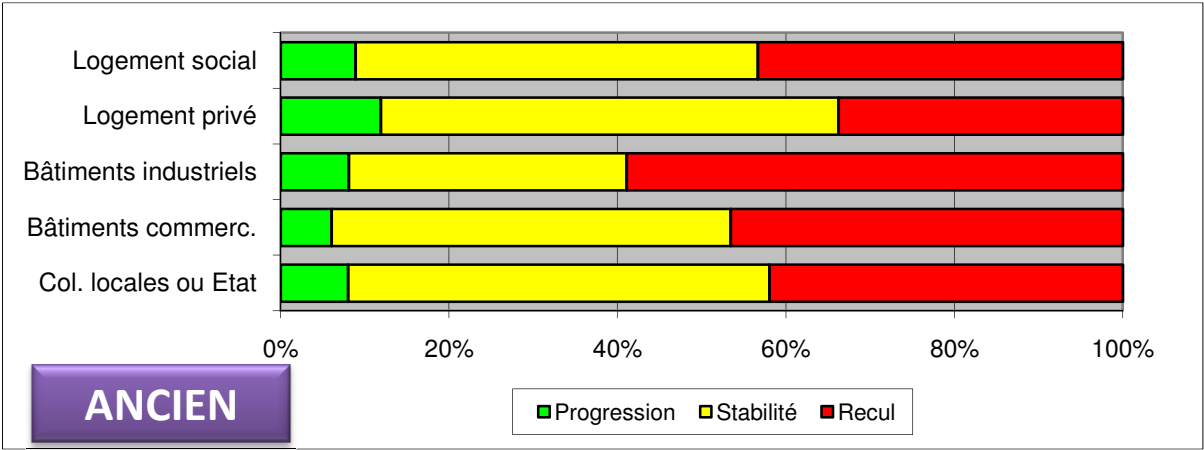
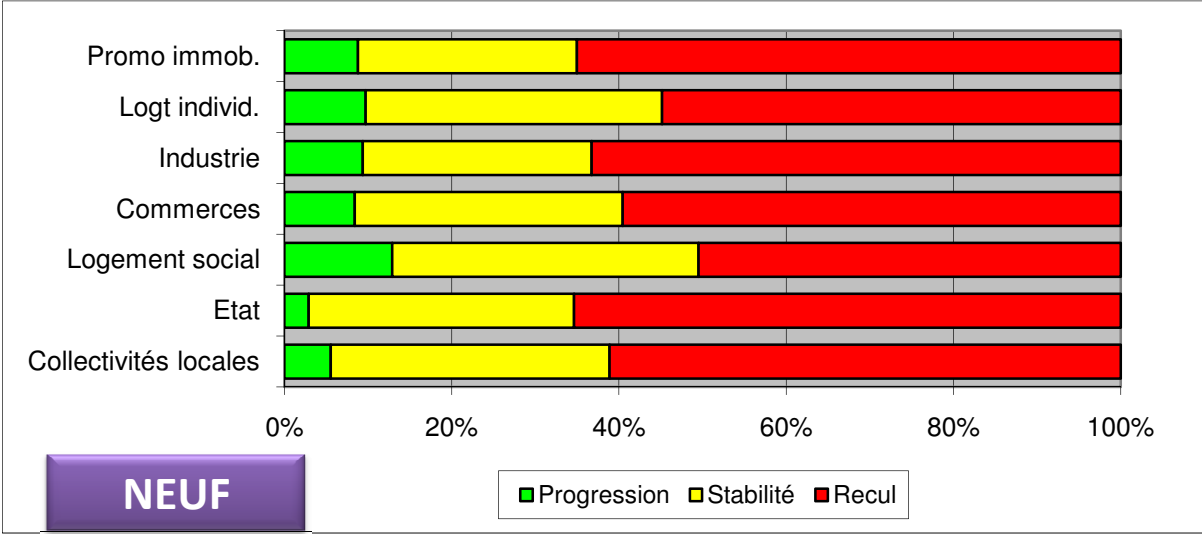
Lot-&-G : -2,0 %



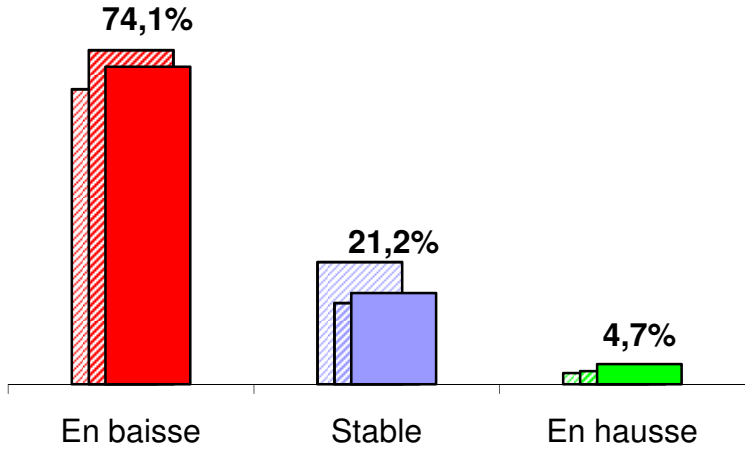
Pyr. Atlant : -5,6 %



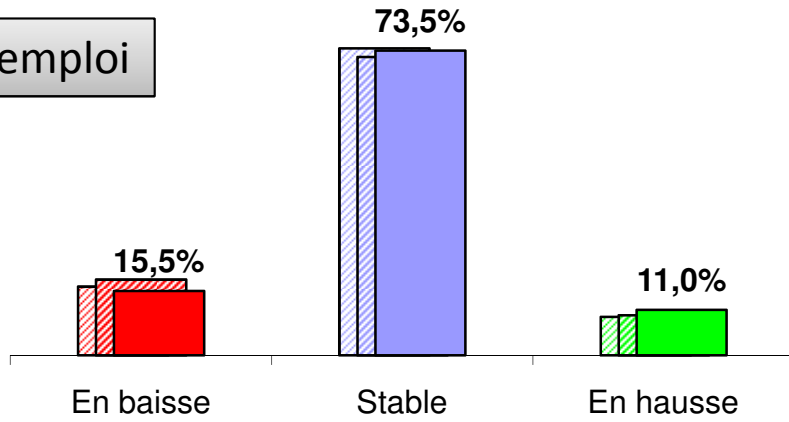
Perception de l'évolution actuelle des marchés



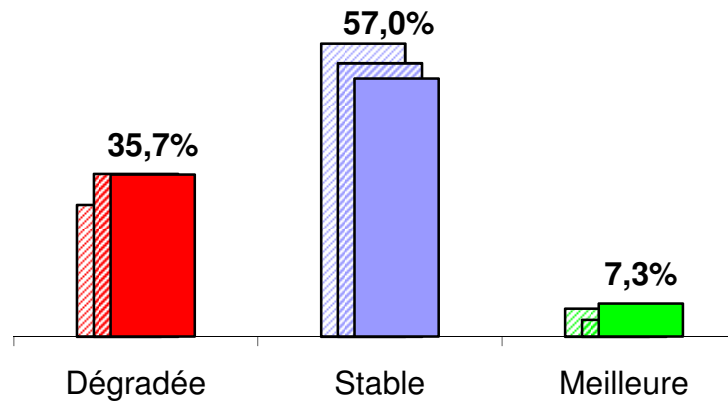
Perception de l'évolution des prix



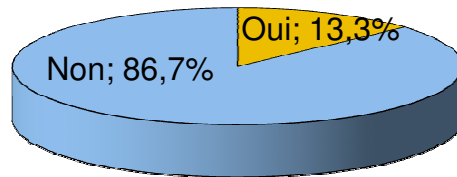
Prévisions d'emploi



Situation de la trésorerie



Durcissement des relations avec les banquiers ?



Durcissement des relations avec les fournisseurs?

